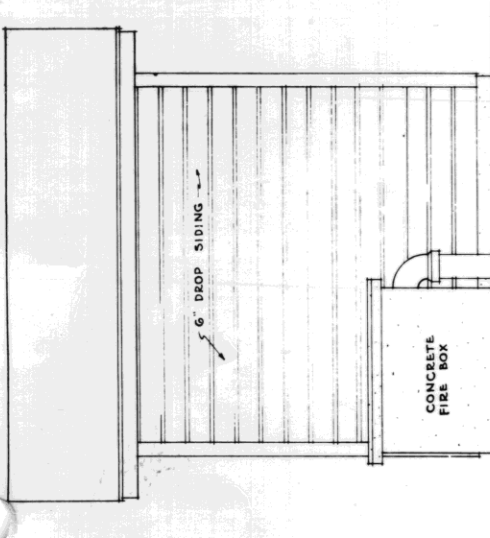
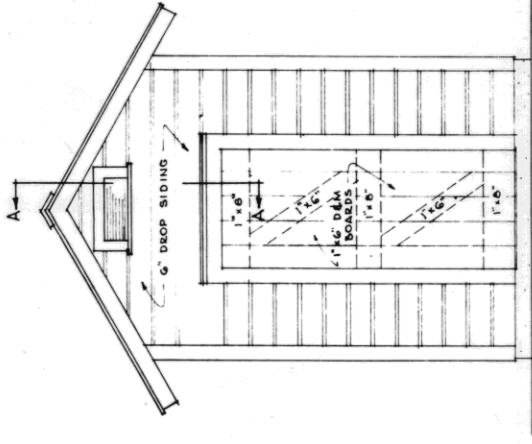


CONCRETE SHOULD BE REINFORCED WITH WOVEN WIRE FENCING & ADDITIONAL BODS AROUND DOORS. SCRAP RODS FREE FROM RUST MAY BE USED FOR THIS PURPOSE. THE TOP SHOULD BE REINFORCED WITH 2" X 4" STUDS. IN ADDITION TO WOVEN WIRE FENCING, IN DOORS MAY BE MADE OF SHEET METAL. DOORS FROM AN OLD HEATING STOVE WILL ANSWER. GRATES MAY BE MADE OF PIPES IF IT IS DESIRED TO HEAT WATER FOR FEED OR BUTCHERING A HOLE MAY BE MADE IN THE TOP SLAB OR THE TOP MAY BE REMOVED AND REPLACED WITH A SHALLOW BOX. THE BOX SHOULD BE MADE OF SHEET METAL PERMITTING A VERTICAL SMOKE PIPE WHICH WILL INCREASE THE DRAFT & FACILITATE HEATING. MOVABLE HANGERS MAY BE MADE FROM 3/8" ROUND RODS.

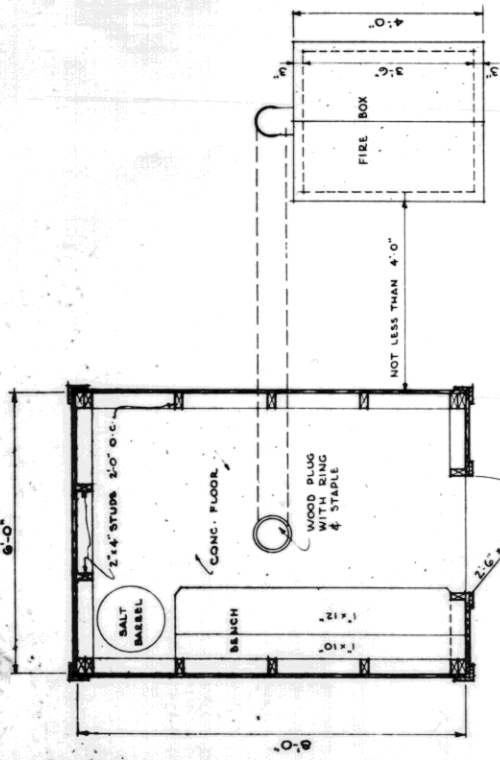
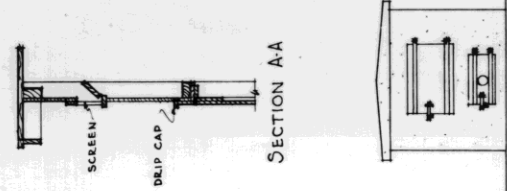


SIDE ELEVATION  
SCALE 1/2" = 1'-0"

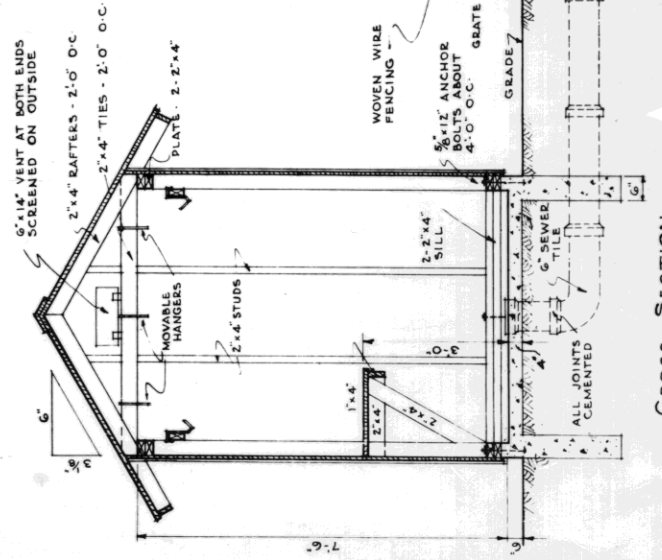


END ELEVATION  
SCALE 1/2" = 1'-0"

SECTION A-A



FLOOR PLAN  
SCALE 1/2" = 1'-0"



CROSS SECTION  
SCALE 1/2" = 1'-0"